

# THE BEAD HOLD

161 Point Chevalier Road • Point Chevalier • Auckland 1022 09 845 1345

## Lady Barbara's MOSAIC BRACELET Instructions

### - Miyuki Square Version -



#### MATERIALS NEEDED

- 1 x tube Japanese # 11 seed beads  
- main colour (A)
- 1 x tube Miyuki Squares - main colour (B)
- 1 x tube Japanese # 11 seed beads  
- contrast colour (C)
- 1 x tube Miyuki Squares - contrast colour (D)
- A clasp/ toggle or button
- Silamide or fireline
- Size 12 needle.

#### EQUIPMENT NEEDED

- A bead mat to work on
- A sharp pair of scissors
- Pen and paper

#### Preparation

- Thread your needle with 3 good arm lengths of Silamide. Bring the needle to the middle of the thread.

- If you are using Fireline, use one strand only and thread up 2 arm lengths

- Take several small pieces of paper and mark them 'A,' 'B,' 'C' etc. Spill out the appropriate colour seed bead under each on your bead mat according to your materials list. Even if you are an experienced stitcher this will make following the instructions much easier!

A

B



#### MAKE THE FIRST TILE

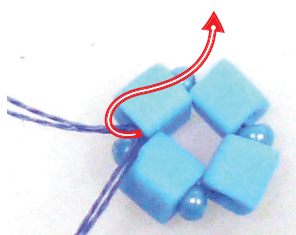
1. Pick up 1 x A and 1 x B. Repeat 3 times.



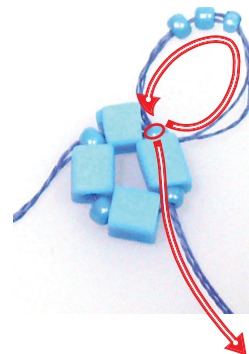
2. Slide the beads to the end of your thread, leaving a tail of approx 15cm (you will need this length to finish one end). Tie the beads into a circle using 2 granny knots.



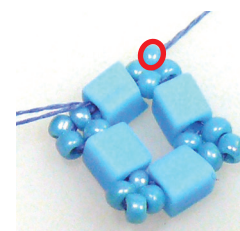
3. Stitch through the square and next seed bead immediately to the right of the knot as indicated by the red arrow.



4. Pick up 3 x A. Stitch through the seed bead (circled in red) you have just come out of and the next square and A to the right in a circular fashion (always circling anti-clockwise). Your beads should form a triangle or 'picot.'



Repeat 3 times. Your last stitch should see the needle exiting the middle seed bead (A) of this first picot (circled in red) ready for the next stage.

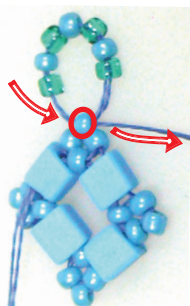


This is the way you will make all the tiles in this bracelet.

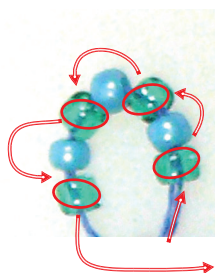
## LINK

1. Pick up one each of: C A C A C A C

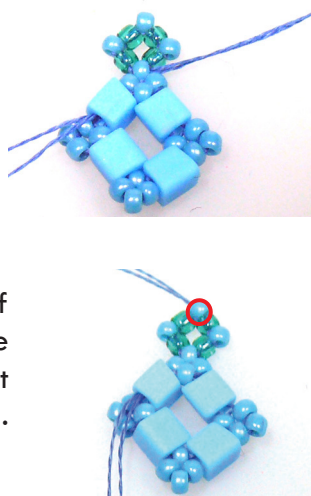
2. Bring your needle back through the other side of the same A (circled in red) it is currently coming out of and draw the thread tight. The new beads should form a circle.



3. Stitch back around the circle of beads, bringing your needle and thread through the C beads only, totally skipping the A beads. Pull your thread tight and your circle will form a diamond shape.



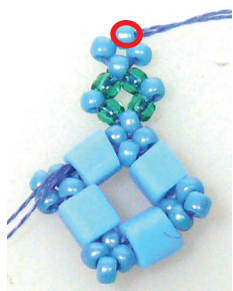
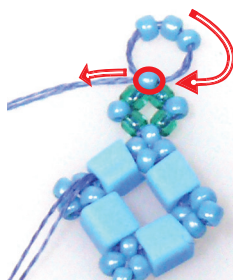
Stitch through the side of the diamond until you are coming out the top point (an A bead), circled in red.



## MAKE ANOTHER TILE

1. Pick up 3 x A and bring your needle back through the other side of the same A (circled in red) it is currently coming out of - draw the thread tight.

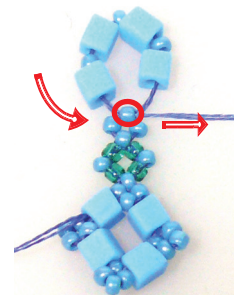
The new beads should result in the formation of another small diamond. Stitch through the side and top beads so you are coming out the top bead of the new diamond.



2. Pick up 1 x B, 1 x A, 1 x B, 1 x A, 1 x B, 1 x A, 1 x B.

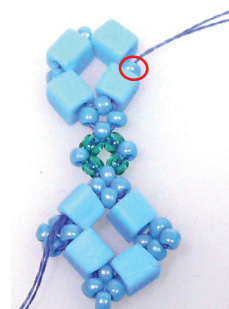
Bring your needle back through the other side of the same A (circled in red) it is currently coming out of - draw the thread tight.

This is the base of the next tile.



3. Stitch through the square and seed bead immediately to the right of the bead you are currently coming out of. You should be coming out the first A bead you put on in the previous step (circled in red).

Pick up 3 x A. Stitch through the seed bead (circled in red) you have just come out of and through the next square and A to the right in a circular fashion (clockwise this time).

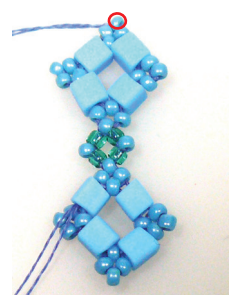


Repeat twice more so that you have a second complete tile made. Make sure your picots are pulled up tight so that a diamond is formed in between each Miyuki Square.



4. Finish by stitching around the outside beads of the tile until you are coming out the new top point (circled in red).

You are now ready to proceed to making another link, and another tile.



## OPTION - Single Row Bracelet

You may decide to have a finer bracelet - just one row with no central embellishment. Do not start the second row of tiles - simply add a clasp to each end of the first row.



**NOTE:** on repeats of this part of the process, you will find it easier to turn your work as needed to match the instructions/diagrams. Otherwise you will find one tile/join is formed to the right and with clockwise motions but the next is just the opposite which tends to get confusing and rather awkward for your stitching motion.

## KEEP ADDING LENGTH TO THE BRACELET

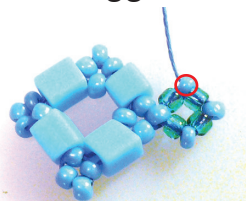
Continue in this fashion, making a link and adding a new tile until this base row is about the right size for your wrist. You need to allow 2 - 3 cm for a clasp. It is better that you make the length a little short if you are unsure as you can always add an extra link and tile at the first end if needed.

**YOU MUST FINISH ON A TILE** (not a link), with the thread coming out of the right hand side point (A bead) of the last tile - circled in red.

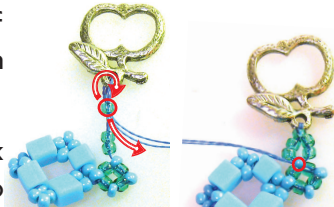


## ADD ONE SIDE OF YOUR CLASP - toggle

1. Make a link as usual, it is just to the right hand side rather than the top of the tile. Make sure your thread is coming out the top point of the diamond (circled in red)



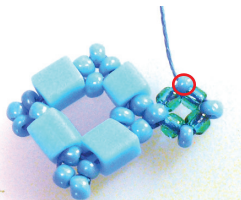
2. Pick up 3 x C, one side of your toggle/clasp, and stitch back down through the last C



Pick up 2 x C and circle back through the A from step one to complete the loop. Stitch around all the C beads in a figure 8 (so you go through all the beads) twice more. This will strengthen the clasp loop.

## ADD ONE SIDE OF YOUR CLASP - Button

1. Make a link as usual, it is just to the right hand side rather than the top of the tile. Make sure your thread is coming out the top point of the diamond (circled in red)



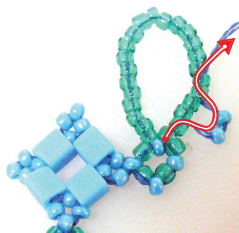
2. Pick up 22 x C. Fold into a loop and see if your button fits through. Add/remove more C's as needed, *but in even numbers!* Once the loop is the right size, circle back through the top A in the link (circled in red)



You can keep your loop plain (in which case stitch back around all the beads twice more to make it nice and secure) OR you can embellish it with a 'frill' of seed beads. If you decide on a plain loop you still need your thread coming out of the same place circled in red as on the embellished loop instructions to the right.

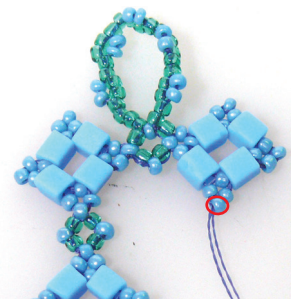
## OPTION: Embellish your loop

Stitch through the first two C of the loop. Pick up 2 x A. Skip the next two C of the loop and stitch through the 2 C after that. Repeat, until you have embellished all the way around the loop. Finish by stitching through the original A of the link. Stitch back around all the C beads to strengthen the loop. End by stitching back around to come out of the right hand point (A bead) of the link (circled in red).



## START THE SECOND ROW

1. Make sure your thread is coming out of the right hand point (A bead) of the centre link your clasp/loop is coming off. Make a new tile in exactly the same way you have made all the others.



Your thread should finish coming out of the bottom point (A bead) of the new tile (circled in red)

2. Make a link.

Your thread should finish coming out of the bottom point (A bead) of the new link (circled in red)



3. Make a second tile.

Your thread should finish coming out of the inner or left hand point (A bead) of the new tile (circled in red)



## CHANGING YOUR THREAD

You will need to change your thread when it is down to about 10cm, preferably when you have completed a full link/tile so you know where to start from again.

- Dip your needle in between 2 edge beads, catching the threads on your needle.
- Pull the thread through until you have a small loop. Bring the needle through that loop and pull tight to make a knot.
- Stitch up/down a few more beads and make another knot in between beads. Repeat.
- Stitch away from the last knot and cut your thread.

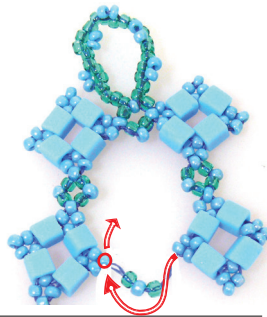
START a new thread the same way, stitching up toward the point you finished the old thread.

## CONNECT ROWS 1 & 2

Now we will make a link to connect the two sides, but a little different to usual.

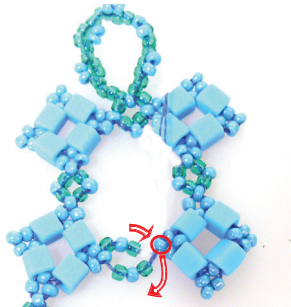
1. Pick up 1 x C, 1 x A, 1 x C

Stitch through the inner point (A bead) of the tile directly opposite (circled in red).



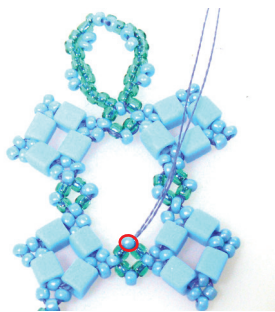
2. Pick up 1 x C, 1 x A, 1 x C

Stitch through the inner point (A bead) of the tile directly opposite (circled in red).



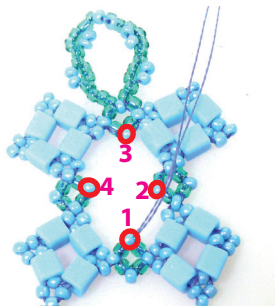
3. Stitch back around through the C beads only and pull your thread tight to form the diamond shaped link.

Your thread should finish coming out of the top point (A bead) of the new link (circled in red)



## EMBELLISH THE JOIN

Take a look at your newly joined rows. There is a big hole in the middle! You will see there are 4 link diamonds, all with an inner point (A bead). These are circled in red and numbered in the diagram.



1. Pick up 1 x A, 1 x D, 1 x A

Stitch through the second inner diamond point (A bead).

2. Pick up 1 x A, 1 x D, 1 x A

Stitch through the third inner diamond point (A bead).

3. Pick up 1 x A, 1 x D, 1 x A

Stitch through the fourth inner diamond point (A bead).

4. Pick up 1 x A, 1 x D, 1 x A

Stitch back through the first inner diamond point (A bead) and draw your thread up tight.

Stitch around so your thread finishes by coming out of the bottom point (A bead) of the last tile you made (circled in red)



## CONTINUE ON . . . until both sides are even

- make a link
- make a tile
- connect rows 1 and 2
- embellish the join

Once you have an even amount of tiles down the side, make sure the last tiles of each row are linked together.

## ASSESS THE LENGTH OF THE BRACELET

Try the bracelet around your wrist. Will adding the second half of the clasp make the bracelet the right length?

YES - move on to attaching the other half of the clasp  
NO - need more length? Add a central tile (in between the last 2 tiles)

- Make sure your thread is coming out of the same point as for when you attached the first half of the toggle/loop.
- Make a tile as usual
- Finish with your thread coming out the top A of the new tile and move on to attaching the other half of the clasp



## ATTACH THE OTHER HALF OF THE CLASP

### 1. TOGGLE

- Make sure the thread is coming out of the same point as for when you attached the first half of the toggle.
- Attach the toggle bar in exactly the same way you did the toggle loop and finish your thread

### 2. BUTTON

- Make sure the thread is coming out of the same point as when you made the loop.
- Pick up 4 x A, go through the shank (loop) of the button and pick up another 4 #11 seed beads. Circle back through the top A in the link



NOTE: If your button has 2 holes, pick up your 4 x A's, go up one hole, pick up 3 x A, go down the other hole and pick up the last 4 x A



- Stitch back around the loop you have created twice more for security and finish your thread

